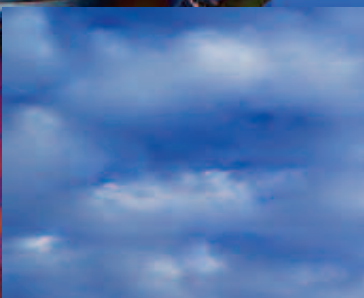
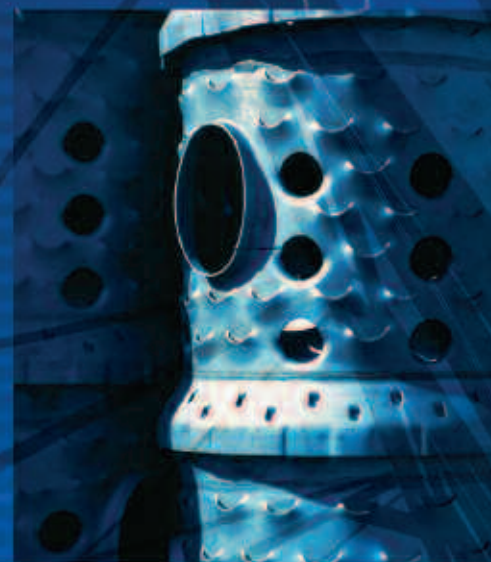
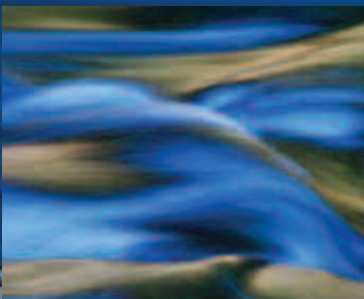


SUPERIOR PRODUCTS

INTERNATIONAL II, INC.



- > Super Therm®
- > Rust Grip® / Astro Grip™
- > Enamo Grip
- > HPC™ (Hot Pipe Coating)
- > HSC™ (Hot Surface Coating)
- > Omega Fire™ (SP2001F)



The right coating for ultimate protection.

RUST GRIP®/ASTRO GRIP

Get full encapsulation—inside and out. Rust Grip® is the one surface protection coating that also acts as a full containment covering. This moisture-cured urethane coating is used successfully in some of the harshest environments; chemical fields, oil fields, oil rigs, and in areas that demand resistance to the effects of day-to-day exposure. Rust Grip® is tested to encapsulate toxic elements such as existing lead-based paint, asbestos and other bio-hazards.

Rust Grip® is easy to use and stops the progression of rust and corrosion, while protecting the substrate, far longer than conventional, industrial grade rust inhibitors. With minimal preparation and no white sand blasting of the surface, Rust Grip® applies with one coat and penetrates deep into the pores of the surface.

Within an hour of application, it begins to cure, pulling moisture from the air and microscopically swelling into the individual pores of the substrate as it hardens. This moisture absorption anchors the coating and seals against any possibility of outside air, moisture or minerals attacking the surface and causing further corrosion or penetration of any kind.

Rust Grip® is reviewed and approved by these organizations:

- USDA Product Safety Branch
- DNV (Det Norske Veritas)
- Louisiana Dept. of Transportation
- State of Georgia, D.O.T.
- IMO (International Marine Organizations)
- ABS (American Bureau of Shipping)
- US Coast Guard
- Tennessee Dept. of Trans.
- University of Kentucky

Rust Grip® is tested to encapsulate:

- Rust
- Lead-based paint
- Asbestos
- Bio-hazardous material

Rust Grip® has the ability to protect against mold and mildew on surfaces that are prone to damage due to prolonged exposure. Rust Grip® creates an unequalled protection surface, proven time and again through on-site evaluations and real-world applications.

- VTEC Labs certified penetration of 18 layers of existing lead-based paint
- Endures 29,700 rub cycles without exposing existing lead-based paint
- Passed 2000 hour salt spray test
- Test "5" on Flame Spread (0-25 Class A)
- Meets EPA Guidelines
- USDA approved for use in surface areas in and around food preparation
- In use for over 10 years on oil rigs and pipe lines
- DNV and Coast Guard approved

Rust Grip® is applicable to surfaces of steel, aluminum, concrete, wood, fiberglass, lead-based paints and other substrates. Rust Grip® will seal out moisture and air with a permanent membrane that stops penetration and deterioration, blocking chemical pollutants that cause corrosion.



More options from Superior Products International II, Inc.

MOIST METAL GRIP

Moist Metal Grip is a two-part epoxy coating designed to pre-coat metal pipes. It is applied by brush or roller even while the surface is condensating. Moist Metal Grip adheres to metal as well as concrete and wood surfaces. Epoxotherm can be applied as the top coat to stop condensation.

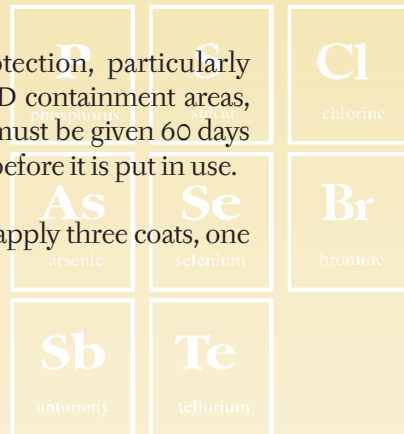
Moist Metal Grip is water, solvent and humidity resistant. To apply, remove algae and residues off of wet surfaces, then apply Moist Metal Grip directly to the surface, with firm pressure to force the coating into pores. Treating rusted surfaces will help protect from further rusting.

Moist Metal Grip is EC certified for potable water usage and approved by European standards. It is tested to withstand temperatures up to 350°F.

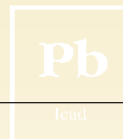
Moist Metal Grip may be submerged in water and is tested for 450 hours of salt spray exposure.



Stronger protection, particularly those in ACID containment areas, Lining Kote must be given 60 days to fully cure before it is put in use.



For best use, apply three coats, one day apart.



LINING KOTE

Lining Kote is a two-part, pigmented, high-molecular epoxy coating, which when applied will produce a tough, yet flexible film coat. Lining Kote is designed for use in acid tanks and to coat pipes to withstand the toughest acid, chemical or solvent environments. It is ideal for petrochemical plants, chemical storage, ballast tanks and more. Lining Kote has outstanding adhesion and when cured will with-

stand direct impact and provide extended durability.

Lining Kote will resist water, humidity, chemical solutions and temperatures up to 350°F. For milder chemical or sewage water containment, allow the coating to breathe for three days, then put it to use. It will finish curing underwater.

Cleaner

SP SUPER CLEANER

SP Super Cleaner is a high performance, full strength cleaning agent that combines exceptional cleaning strength, safety and quick, total evaporation.

Substitute SP Super Cleaner for any of the hazardous solvents that are more commonly used in

industrial applications, particularly where high-solvency is a prime consideration. Use SP Super Cleaner on parts, washers, ultrasonic cleaners or flow rinsing systems. It may be applied by wiping, coarse spraying, or by dipping.

SP Super Cleaner does not evaporate as quickly as acetone, which results in lower VOC emission levels. It is as effective as acetone but safer to use because it is nonflammable and reducible with water.

ENAMO GRIP

Blended as a two-part polyurethane enamel, Enamo Grip resists water, humidity, staining, acids, solvents and chemicals. In test environments, and in field applications, Enamo Grip has continued to excel as a premier finish sealer for walls, floors and ceilings—over a variety of materials. Use Enamo Grip over masonry, wood, metal, concrete and other porous surfaces.

Enamo Grip can be applied by spray, brush or roller, and finishes with an even, self-leveling gloss surface. No brush marks will show in the finished surface.

Once cured, clear Enamo Grip is graffiti-proof. Krylon spray paints, magic markers and other marring mediums can be wiped off completely. Enamo Grip is in use in Rome, Italy to protect public transportation from the destructive effects of graffiti. The use of Enamo Grip as a protective finish helps to save millions of dollars annually by reducing or even eliminating the need for blasting and repainting graffiti marred surfaces. Enamo Grip is not affected by solvents and does not allow paints or oils to penetrate its surface.

Typical uses for Enamo Grip include:

- Architectural and maintenance situations that require extensive exterior durability
- As a topcoat over Rust Grip® or Moist Metal Grip
- As a one-coat system for graffiti protection
- As a floor covering where a tough, long-lasting finish is required—non-skid can be added to the formulation if required
- Anywhere that a UV-resistant topcoat is required

Enamo Grip provides a permanent, protective membrane that stops water penetration, preventing surface deterioration, contamination and the development of mold and mildew. This makes Enamo Grip an excellent finish choice for fully submersible surfaces such as pools, Jacuzzis, hot tubs, waterslides, and at waterparks.

Enamo Grip is in use all over the world, in applications that demand extended protection from weather, UV radiation, and wear and tear. Enamo Grip is USDA approved for use in and around food preparation areas. Enamo Grip has a 15+ year expected lifespan under normal conditions.

Enamo Grip is a reliable topcoat and sealer for use in harsh environments including uses for UV protection, water resistance, and for mold and mildew protection. It is an excellent finish over Rust Grip® and Super Therm®.



Graffiti marred transit car, costly to clean and repaint.



Once coated with Enamo Grip, graffiti cleans off easily.



More options from Superior Products International II, Inc.

SUPER BASE HS

Super Base HS is a one part, water-based, high performance elastomeric acrylic coating designed for application on roofs or wall structures to seal cracks, and to perform as an excellent base coating.

Super Base HS adheres tenaciously, resists ponding water, resists UV and weathering, and remains tough and flexible. It can be used alone or

with a topcoat of Super Therm® to create a long lasting, water tight energy barrier roofing system. Super Base HS can be applied to tar, wood, asphalt shingles or concrete. It may be applied with airless or pot sprayers, brush or roller. Coverage rate is 30 sq. ft. to fill cracks and as a roofing base, or 100 sq. ft. to seal wood or concrete as a base coating for Super Therm®.

Super Base HS should be used specifically as a primer, applied directly over the top of sealing tape—where sealing tape is used to mask seams—before Super Therm® is applied on a roof or wall substrate.

INNER SEAL

Inner Seal is used exclusively to prevent moisture migration or absorption of oils and residues into the surface of concrete or masonry. Inner Seal is a combination of non-acidic water-soluble agents that penetrate through open pores of concrete to a depth of one inch. Inner Seal sets up a chemical

reaction with salts in the concrete creating a barrier that is insoluble to water.

When properly applied, Inner Seal adds strength to mortar between concrete bricks, sealing and extending the life of old concrete.

Inner Seal is not a surface coating. It is designed to penetrate deep into the pores of old concrete to stop the spalling and deterioration of the concrete surface. It neutralizes alkali in the concrete, turning it to a gel, which then hardens. This effectively binds the concrete into a more dense mass.

TOTAL SEAL

Total Seal is a tough, two-part epoxy-solvent-based coating, designed to seal concrete and masonry. Total Seal provides excellent solvent and chemical resistance. Use it to coat

concrete floors or concrete block walls. Total Seal may be used below grade, and makes an excellent basement liner to block water leakage.

Total Seal can be tinted to any color. It dries to a semi-gloss finish and is scuff and impact resistant.

AQUA POX

Aqua Pox is a two-part, amine-cured, epoxy coating that will demonstrate the physical properties of solvent-borne epoxies but in a water-reducible formula.

exhibit outstanding resistance to water, chemicals, acids, solvents, oils and gasoline. It is designed for the protection of steel and concrete surfaces.

Aqua Pox displays excellent adhesion properties and produces a surface coating/film that will

Aqua Pox should be used for all interior sealing applications where durability is a must and solvent

odors or flammability are not acceptable, such as the interior lining of tanks. Aqua Pox produces a surface that will resist impact, abrasion and scuffing.

Aqua Pox can be tinted to any custom color.



HPC™ HOT PIPE COATING

Hot Pipe Coating is a combination of high performance, specially designed, high-temperature ceramics and resins, in a water-borne, nonflammable formula. It is used as a coating to reduce surface heat on pipes carrying hot liquid, gas or steam.

Hot Pipe Coating is designed to coat surfaces that sustain temperatures between 400°F (200°C) and 900°F (500°C).

Hot Pipe Coating prevents the loss of radiant heat from pipe surfaces. By retaining the heat from the interior of the pipe or vessel, heat that would have escaped now adds

back to the overall heat of the fluid or gas within the pipe. Hot Pipe Coating will hold heat in a transmission pipe for longer distances than conventional wraps.

Hot Pipe Coating is applied by spraying directly to operating hot surfaces that have previously been power cleaned or sand-blasted. Hot Pipe Coating may be applied to vehicle undercarriages and catalytic converters to reduce heat transfer into a vehicle. When applied to manifolds or headers, HPC enables gas to be burned efficiently, with the probability to increase gas mileage. HPC can retard corrosion.

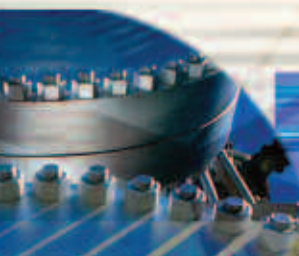
HSC™ HOT SURFACE COATING

Like Hot Pipe Coating, Hot Surface Coating is a combination of high performance, specially designed, high-temperature ceramics and resins in a water-borne, non-flammable formula. HSC is designed to be applied by brush, for applications requiring smoother surfaces over small diameters.

Hot Surface Coating is designed to coat surfaces with temperatures between 150°F (66°C) and 400°F (204°C).

Hot Surface Coating is applied while the surface is hot, which prevents downtime and lost production hours. Hot Surface Coating can be applied over valves and elbows where wraps cannot be effectively applied.

Just as Hot Pipe Coating does, Hot Surface Coating prevents the loss of radiant heat from surfaces. By retaining the heat from the interior of the surface, pipe or vessel, heat that would have escaped now adds back to the overall heat of the fluid or gas within the pipe or surface.



OMEGA FIRE™ (SP2001F)

Omega Fire™ is a blend of eight ceramics, combined together to create a heat block (fire wall) that resists against heat migration. Omega Fire™ is a water-based coating that dries tough and is designed to withstand temperatures of 2000°F without failure.

During a fire, the ceramics in Omega Fire™ will cause the subsurface to harden and block the flame and repel the heat transfer. Because the heat is controlled, the adhesion side of the coating will remain flexible and the coating will not crack or fall off when the structure expands or contracts.

Omega Fire™ is fungus, mildew and corrosion resistant. It offers a resin blend to form a tight surface. It stops the corrosive effect of moisture and air from penetrating a coated surface.

Omega Fire™ may be applied to any clean, dry interior surfaces that are free of wax, grease and oil. Omega Fire™ is applicable to metal, concrete, stucco, plaster board, wood, plastic and composites for fire retardance. Use on ceilings and on walls.

Omega Fire™ is UL tested for a 165 minute fire endurance rating.



OMEGACIDE™ / OMEGASECT™

Omegacide™ and Omegasect™ are water-based acrylic insecticide formulation. Omegacide™ and Omegasect™ dry to a durable, washable finish that is odorless, nonflammable, and low in toxicity. Either can be used in exterior or interior surfaces.

Omegacide™ and Omegasect™ are used to effectively eliminate insects by transferring insecticide to the bottom of an insect's feet as it crosses the coated surface. Omegacide™ and Omegasect™ are

used to control flies, mosquitoes, wasps, spiders, cockroaches, ants, moths, clover mite and gnats.

In field tests, Omegacide™ and Omegasect™ were applied to an animal barn. After ten days, all insects were eliminated and the barn remained free of insects for a full year. Neighboring structures that were not treated continued to draw insects.

Omegacide™ is ideal for commercial jobs. Omegasect™ is made for use in

residential and children's play areas. Omegacide™ and Omegasect™ will last for 12 months, and when reapplied, insects show no sign of adaptation or immunity.

Omegacide™ and Omegasect™ are USDA approved and EPA registered.





WHAT MAKES A SUPERIOR PRODUCT

For over 17 years, Superior Products International II, Inc. has researched, developed and tested proven solutions to the real-world problems of heat, corrosion, sealants and insect elimination. Each of our branded products has the backing of extensive scientific trials, both in the lab and in the field. Superior Products holds the distinction of having scientific research and testing relationships with major corporations around the world and with NASA.

Superior Products International II, Inc. works through a network of dedicated distributors who are rigorously trained in the use and application of Superior Products branded line of coatings. Each Superior Products distributor strives to demonstrate the high standard of the Superior Products line in performance, delivery and results.

Each Superior Products' branded product offers more than claims of results—our products' successes are our proof. All over the globe, more industrial, commercial, petrochemical and residential coatings are Superior branded products. Superior Products International II, Inc. has built a reputation on the proven results of industrial coatings, but Superior Products is more than just coatings.

We are a solutions driven company. Our product line stems from our historical commitment in helping to solve problems. Each product found an avenue to existence based upon a tangible or required need in the field. When a company or industry is pushed to resolve a problem with heat, corrosion, sealants or insect elimination, Superior steps up to deliver.

The full Superior Products International II, Inc. product line:

- > Super Therm® > Rust Grip® / Astro Grip™ > Enamo Grip > Enamo Grip W/B
- > HPC™ (Hot Pipe Coating) > HSC™ (Hot Surface Coating)
- > Omega Fire™ (SP2001F) > Moist Metal Grip > Lining Kote
- > Super Base HS > Inner Seal > Total Seal > Aqua Pox > SP Super Cleaner
- > Omegacide™ > Omegasect™ > Sunshield > ATC > SP Primer



Superior Products International II, Inc.
10835 W. 78th Street
Shawnee, Kansas 66214
913-962-4848
FAX: 913-962-6767
www.spicoatings.com

SUPER THERM[®]



The right coating for ultimate protection.

SUPER THERM[®]

DEFEATING THE THEORY OF (R)

HEAT REFLECTION, NOT ABSORPTION

In conventional insulation, the measurement of resistance is based upon the transference of heat through an insulation material. This measurement is known as (R). Insulation materials that use this guide of resistance are a means to temper heat, but also require thickness. The thicker the material, the slower the time will be to absorb and eventually transfer the heat from the external source into the insulated environment. These materials allow a 100% loading of surface heat facing the heat source.

Super Therm[®] does not absorb heat and, therefore, does not require thickness—effectively eliminating a measurement of (R) value. Super Therm[®] is a blend of ceramic compounds that, when applied to a surface, will reflect heat away from protected areas. Super Therm[®] only allows a 5% heat load of the surface facing the heat source.

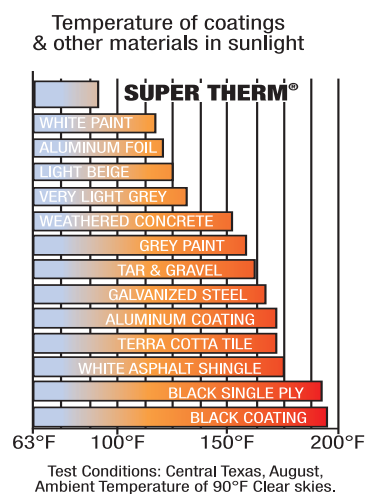


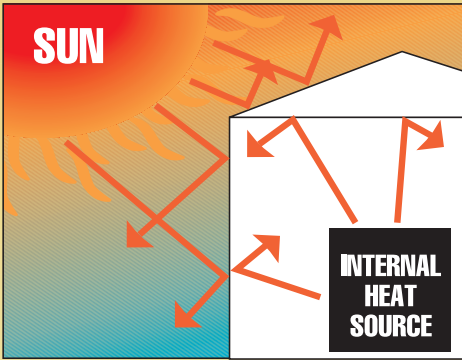
Super Therm[®]:

- Has a reflective value of 95%, effectively blocking all three windows of heat—infra red, visual light and UV (infrared emissivity rating of 0.901 to repel surface load)
- Creates a moisture barrier to resist condensation, mold and mildew (ASTM D 7088; 9/10 per Buckman Laboratories)
- Has a class A Fire Rating—“0” flame and smoke. Resists fire and chemicals, provides insulation, and corrosion protection
- Out-performs fiberglass, cellulose, fillers and polystyrene foam
- UL, FM, ABS and USDA approved
- ICC approved, CRRC Listing—selected Energy Star[®] with only a 0.6% drop in three years (less than 1% loss of reflectivity on the same roof area after three years weathering)
- Is a water-based coating that is VOC compliant
- Reduces surface maintenance with 15+ years of expected wear

	Super Therm [®]	Fiberglass	Cellulose Fillers	Ceramic Paints	Polystyrene Foam
RE19, one, 10-mil coats (Interior App.)*	✓	10"	8"	✗	5.5"
RE19, one, 10-mil coat (Exterior App.)**	✓	✗	✗	✗	✗
68% Sound Blockage	✓	✓	✓	✗	✓
Rated as one of EnergyStar's [®] best overall	✓	✗	✗	✗	✗
Approved by California Cool Roof program	✓	—	—	✓	—
NASA tested	✓	—	—	✗	—
Proven for both interior and exterior	✓	—	—	—	—
Class "A" rated "0" flame spread	✓	✗	✗	✓	✗
Passed 2000 hrs of salt spray testing	✓	✗	✗	✗	✗
USDA approved	✓	—	—	—	—
Moisture resistant	✓	✗	✗	✓	✗
Blocks 99.5% of infrared rays	✓	—	—	—	—
Resists mold and mildew	✓	✗	✗	✓	✗
K Factor (less is better)	0.10	0.29	0.31	✗	0.28
25 years, residential life expectancy	✓	—	—	✗	—

✓ = Approved
 — = Partial Approval
 ✗ = Not Possible





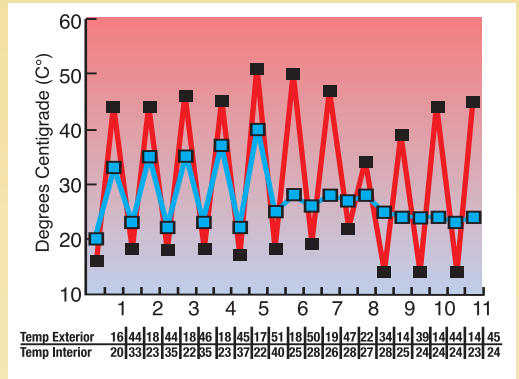
The composition of Super Therm® makes it a superior solution in insulation requirements. Super Therm® is a combination of high-performance aliphatic urethanes, elastomeric acrylics, and resin additives in a water-borne formula. Super Therm® has four different ceramics, used to block 95% of the three sources of heat—visible light, ultra violet rays and infrared rays. Super Therm® creates a permanently flexible “breathing” membrane that also stops water penetration to help in the prevention of corrosion

and surface deterioration (ASTM Tested).

Beating the Heat:

Subject: Metal roof in Sevilla, Spain; temperature readings taken 8:00 am and 2:00 pm to determine increase of heat load from the coolest point of the day to the hottest. Super Therm® was applied at the beginning of the 6th day (shown on chart). A noticeable change is recorded on subsequent readings, indicating a leveling of temperature between the morning

Super Therm® has found success in a variety of insulation applications—from housing, to protection of container and storage facilities, and as the only insulation barrier in use on the world’s largest casino boat.



and afternoon interior readings compared to the consistent exterior temperature readings (private industry test data).

NASA VALIDATES SUPER THERM® WITH FLAMMABILITY AND TOXICITY TESTING.

SUBJECT: Flammability Testing

“The subject material has been tested for flammability by the procedures outlined in NHB 8060. 1B/C, Test 1.

The subject material met the acceptance criteria of NHB 8060 1B/C Test 1. The overall rating was determined by an analysis of all available data.”

– C.F.Key
Deputy Director
Materials & Processes Laboratory
5/3/95

Sample Size: 2.5” x 12”
Substrate: 0.020” Aluminum
Cure: 2 coats applied per test sample:
(1) 2 hours, 75F., 14.7 psia
(2) 336 hours, 75F., 14.7 psia

Test Number	Thickness	Environment
M103903-A	0.0080”	30% Oxygen 10.2 psia
M103903-B	0.0076”	34% Oxygen 10.2 psia
M103903-C	0.0079”	40% Oxygen 10.2 psia

Burn length for all three = 0”
Rating for all three = A

SUBJECT: Toxic Off-gassing

“The subject material has been tested for toxic off-gassed products by the procedures outlined in NHB 8060. 1C, Test 7, Space Orbiter.

The subject material met the acceptance criteria of NHB 8060. 1C for toxic off-gassing...

An overall rating of K has been given to this material for toxicity.”

– C.F.Key
Deputy Director
Materials & Processes Laboratory
5/16/95

Composition: Acrylic & Polyurethane with Ceramic Filler
Cure: 1st Coat: 2 hours, 75 F., 14.7 psia
2nd Coat: 336 hours, 75 F., 14.7 psia
Material Code: 02181
Project: Space Station Study
Test Number: M103903-D
Test Temperature: 120F
Sum T100 Value: 0.02196
Max. Limit Weight: 2276.87 lbs
Rating: K (“0” offgassing)



SUPER THERM[®]

THE SECRET OF EMISSIVITY

Nissan Building—Before coating



Nissan Building—After coating



(courtesy of Daiko Shokai-Asian Distributor)

“When radiation energy falls on a body, the body will warm up until it emits as much heat as it absorbs and then stops warming, reaching a state of thermal equilibrium. If the heat loss by the body takes place in empty space, the only way in which the body can lose heat is through radiation. In that case its radiated energy flux will be equal to the absorbed flux.

Reflectivity = 1 - Absorptivity.

What this means is that if all energy is reflected, no energy is left to be absorbed.

Absorptivity = Emissivity

What this means is that only the absorbed energy is emitted.

So if there were no absorption of energy, there would be no emission of energy either.

...As a point of reference, emissivity refers to the properties of a material; emittance to the properties of a particular object that depends on the shape of the object, oxidation and surface finish. As an example, if shiny metal surface which has a low emissivity is oxidated and gets dirty, its emissivity remains the same but its emittance becomes very high.”

—Inn Choi, PhD.

“Super Therm reflects 95% of all radiation allowing only a 5% heatload. Super Therm repels (throws off) 90% of the 5% heat load from the surface.”

—J.E. Pritchitt

WHAT MAKES A SUPERIOR PRODUCT

For over 17 years, Superior Products has researched, developed and tested proven solutions to the real-world problems of heat, corrosion, sealants and insect elimination. Each of our branded products has the backing of extensive scientific trials, both in the lab and in the field. Superior Products holds

the distinction of having scientific research and testing relationships with major corporations around the world and with NASA. When a company or industry is pushed to resolve a problem with heat, corrosion, sealants or insect elimination, Superior steps up to deliver.



Superior Products International II, Inc.
10835 W. 78th Street
Shawnee, Kansas 66214
913-962-4848
FAX: 913-962-6767
www.spicoatings.com

