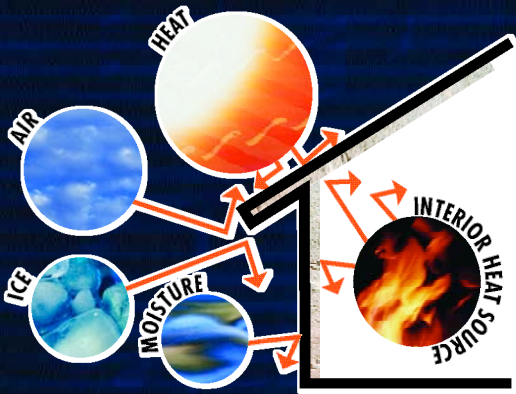


# iSTUCCO™

## WHERE INNOVATION MEETS UTILITY

NO CRACKING, NO PEELING AND  
EFFECTIVE INSULATION FROM TEMPERATURE  
FLUCTUATION, ALL IN ONE APPLIED STUCCO SYSTEM

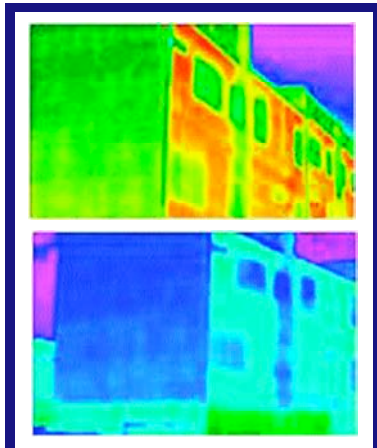


**The iSTUCCO™ System** is a mixture of high performance acrylics and ceramics specially blended for insulation, breath-ability, adhesion, toughness and texture.

**The iSTUCCO™ System** resembles traditional, field-mixed stucco that has been painted, yet the **iSTUCCO™ System** will not crack or peel and will remain flexible throughout its life.

**The iSTUCCO™ System** is cost effective, lightweight, durable, impervious to moisture and designed to coat a variety of surface structures utilized in both the commercial and residential markets today.

# iSTUCCO™



## Thermal imagery comparison, July 2007, Austin TX

Traditional stucco was used on Phase I of the test property (shown in the top image) and iSTUCCO™ was used on Phase II (bottom image) of the same development.

Both images were taken on the same day, at approximately the same time.

Images detail how **traditional stucco absorbs and holds heat** whereas the **iSTUCCO™ system does not.**

## CERTIFICATIONS (Super Therm)® :

- UL (Underwriters Laboratory, Inc.) Approval
- Factory Mutual Approval
- BOCA (Building Officials Code Administrators) Approval
- ICC (International Code Council) Approval
- DNV (Det Norske Veritas) Approval for Worldwide Salt Water and Marine Use
- U.S. Coast Guard Approved
- IMO (International Marine Organization)
- USDA (United States Department of Agriculture) Approval
- Energy Star Program approved partner
- CRRC Listing—selected Energy Star® with only a 0.6% drop in three years (less than 1% loss of reflectivity after three years weathering)

In conventional insulation, the measurement of heat resistance is based upon the transference of heat through an insulation material. This measurement is known as (R) value. Insulation materials that use this guide of resistance require thickness. The thicker the material, the slower the time will be to absorb and eventually transfer the heat from the external source into the insulated environment. These materials allow a 100% load and transfer of surface heat facing the heat source. The iSTUCCO™ System is an alternative to this standard.

The iSTUCCO™ System does not absorb heat and therefore does not require thickness, effectively eliminating a measurement of (R) value. The iSTUCCO™ System is a blend of ceramic compounds that will repel heat away from protected areas when applied to a surface. The iSTUCCO™ System only allows a 5% load of surface heat facing the heat source.

The iSTUCCO™ System outperforms the competition by:

1. Insulation (RE-19): Has reflective value of 95%, effectively blocking all three windows of heat—infrared, visual light and UV (high thermal emissivity rating of 0.901 to repel heat load).

The iSTUCCO™ System performs the most important insulation function recognized by all engineering and architectural formats: reducing the Delta T from the hot side to the cool side of any surface.

2. Moisture Barrier (4.4 perm rating): Creates an effective moisture barrier to resist moisture migration and air infiltration.

3. Flexibility and Durability: Does not crack or chip like traditional stucco or other alternatives.

4. Fire Resistance (class "A"): "0" flame and smoke—resists fire and chemicals.

5. Green Building Product:

- Certified Environmentally Friendly
- LEED Green Building Rating
- MBDC Cradle to Cradle Certified

The iSTUCCO™ System includes an insulating coating that possesses 95% reflectivity and 100% UV protection and blocks 99.5% of infrared energy. This means greater energy savings (RE-19) and longer roof/sidewall life, while providing a moisture barrier.

How does it work? The iSTUCCO™ System combines the best properties of two outstanding products, SP Ceramic Stucco and Super Therm®, which is designed with four separate ceramics; two of the ceramics are reflective, one is an infrared blocker and the fourth acts as a dead air space between the coated surface and the substrate. The result is an applied coating that is both reflective and insulating. The iSTUCCO™ System creates an unbeatable and affordable solution to stop heat and/or cold conduction through the coating film and a beautiful, long-lasting stucco finish.



Superior Products  
International II, Inc.®  
sales@spicoatings.com  
www.spicoatings.com

*The right coating for ultimate protection.*

